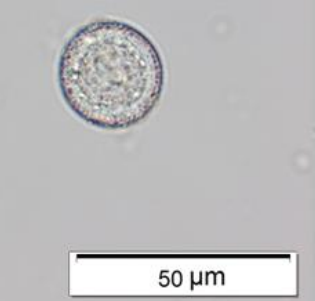
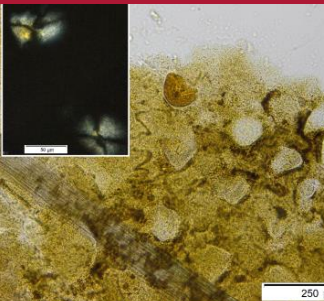
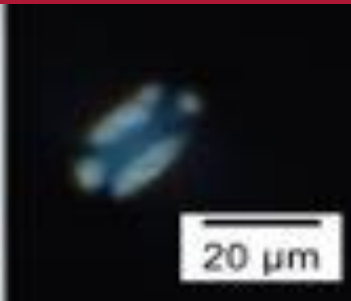
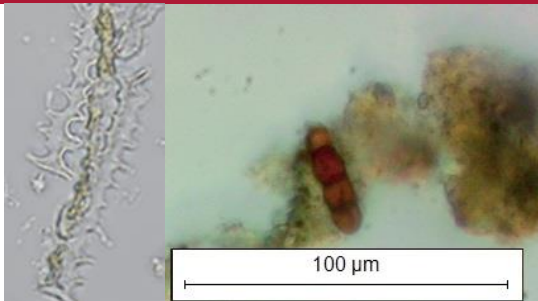




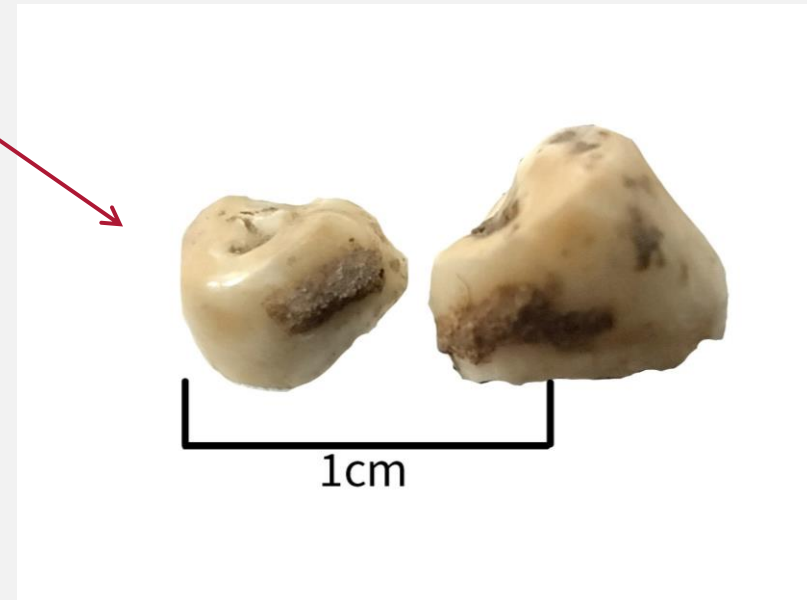
Tandsteen en microresten



Dr. Sarah Delaney



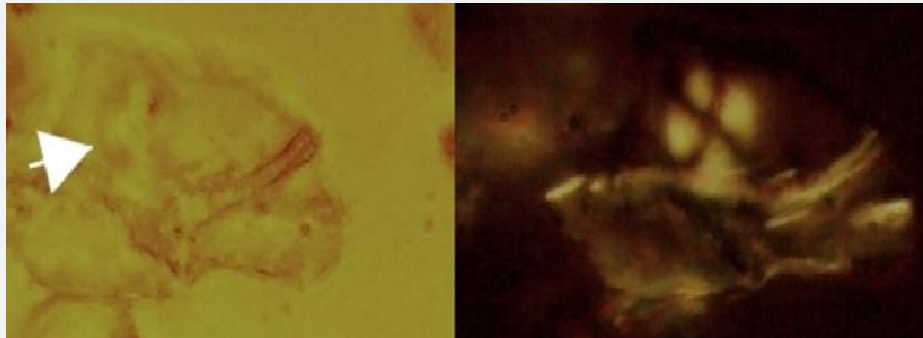
Ewijk - Tandsteen van een tandkapsel (Vroegmiddeleeuws)



- Tarwe of gerst (Triticeae)

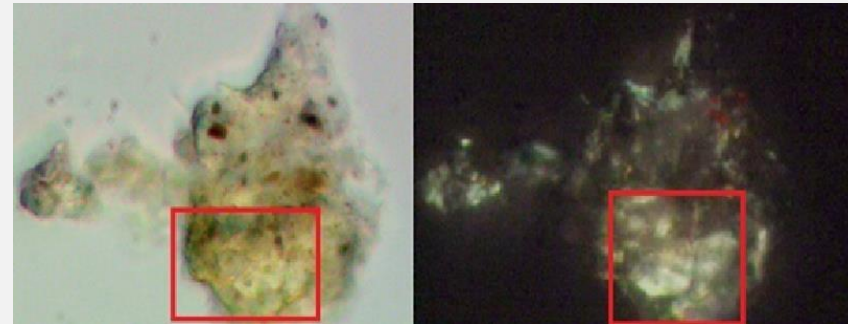
Zetmeelkorrels

Fytoliet van Tarwe (*Triticum* sp.)



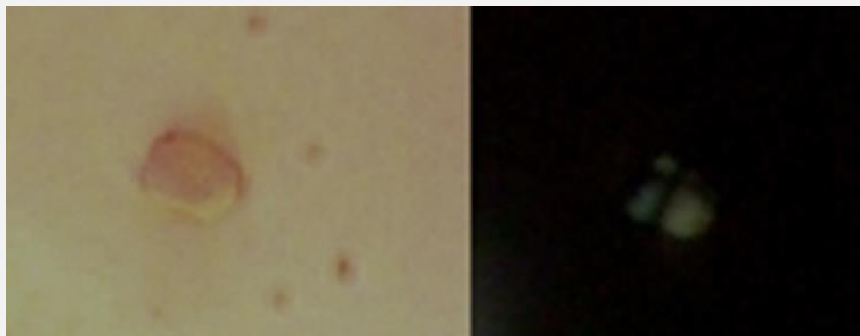
- Haver (*Avena* sp.)

Zetmeelkorrels

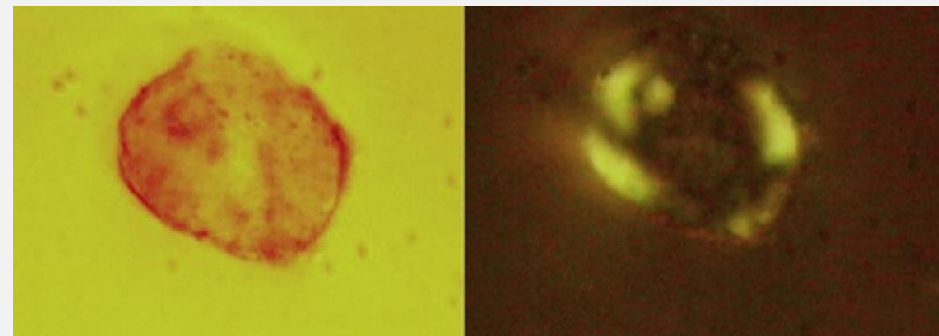


- Pluimgerst (*Panicum* sp.)

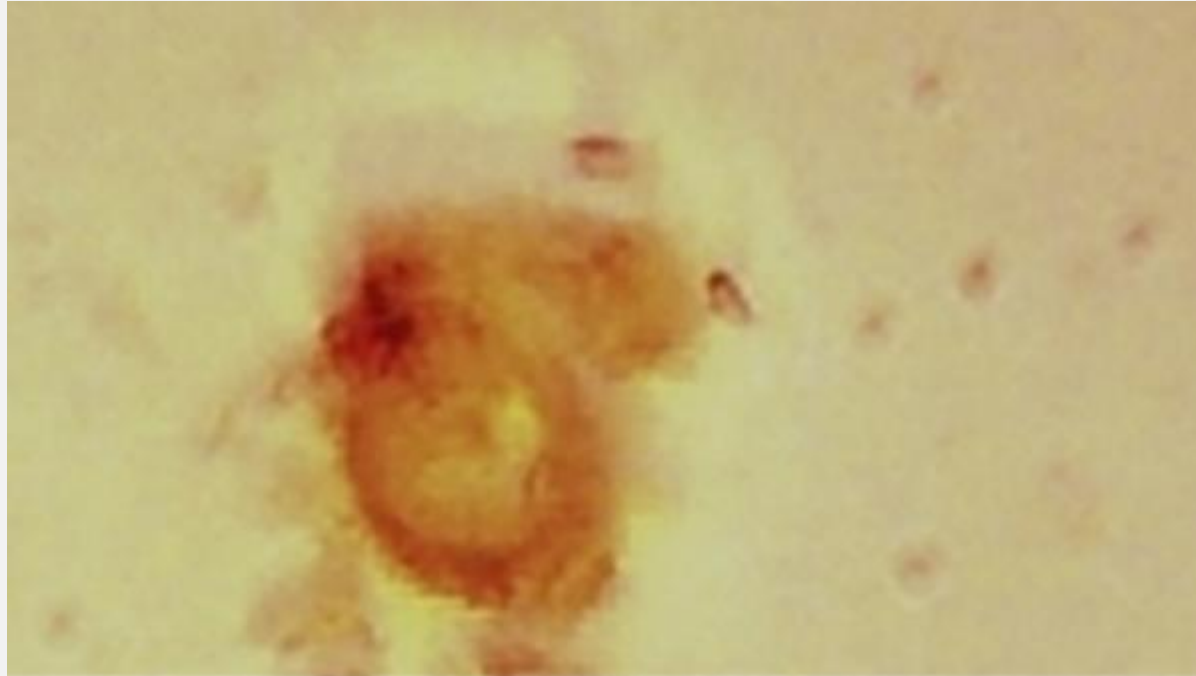
Zetmeelkorrels



- Gekookt Zetmeelkorrels



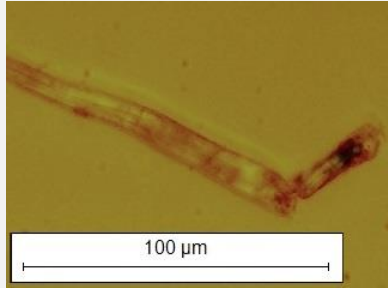
Parasiet – Runders-/varnkenlintvorm (*Taenia* sp.)



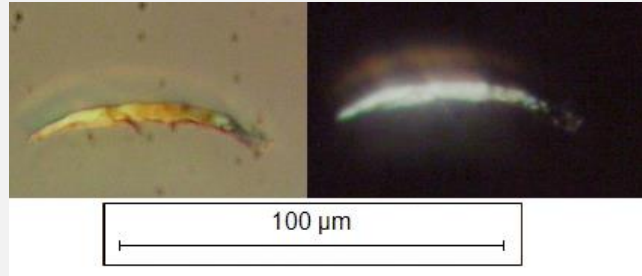
Microresten van de leefomgeving



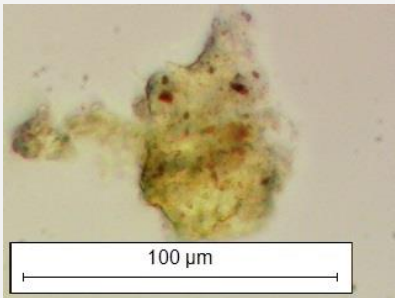
- Vlas (*Linum* sp.)



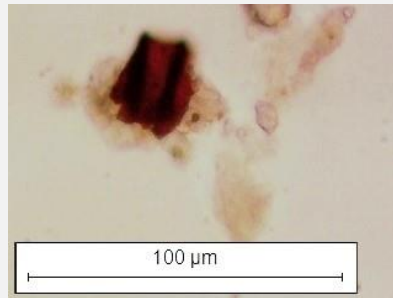
- Wol



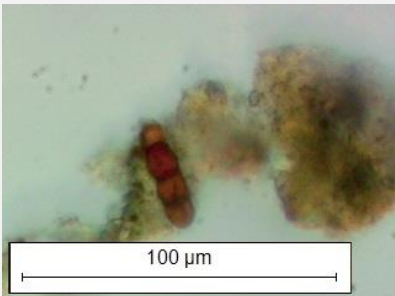
- Microhoutschool



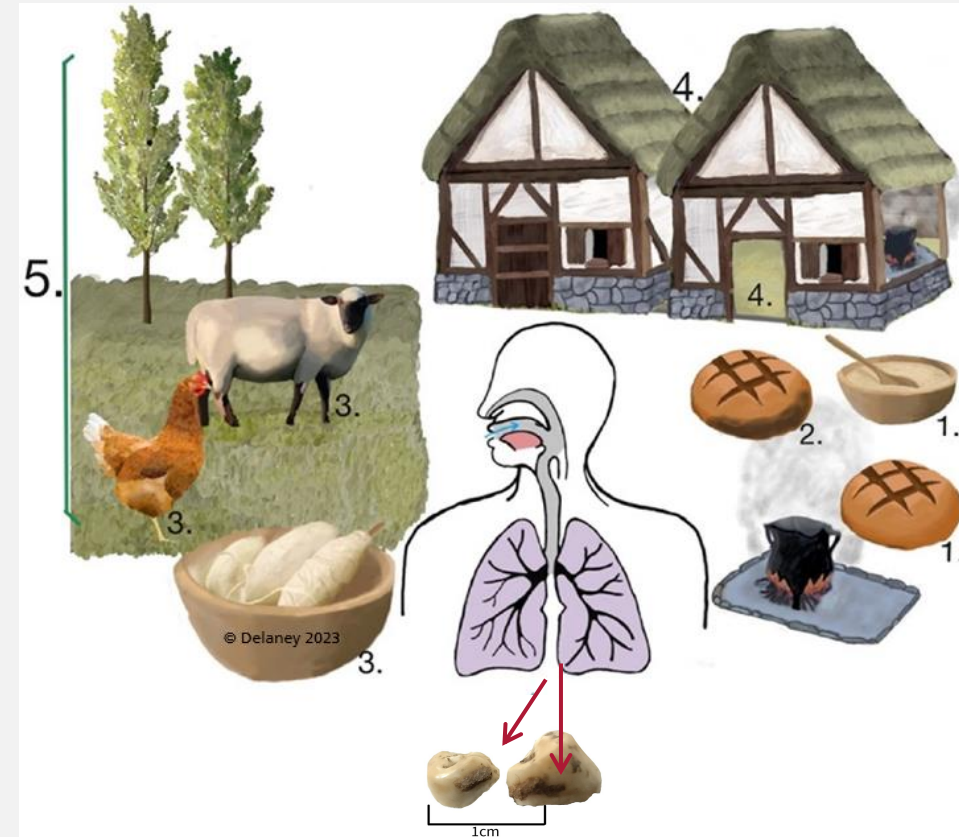
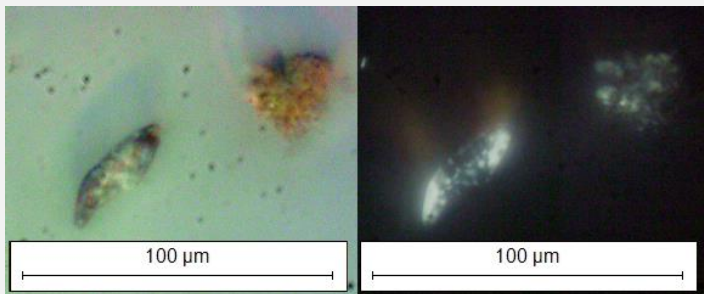
- Verkoold fytolieten van tarwe kaf (*Triticeae*)



- Schimmelsporen



- Hout



1. Eten; 2. vasthouden aan eten; 3. en 4. huiswerk, kleding, arbeid, leven/werken met dieren, en leefomgeving; 5. Lokale ecologie

Grotere datasets – 6 vindplaatsen van Engeland (Middeleeuwen)



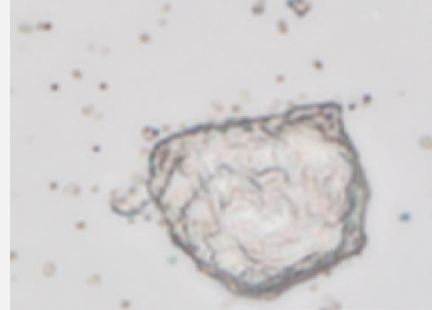
Microresten van Tandsteen uit Groot Brittannië (Middeleeuws)



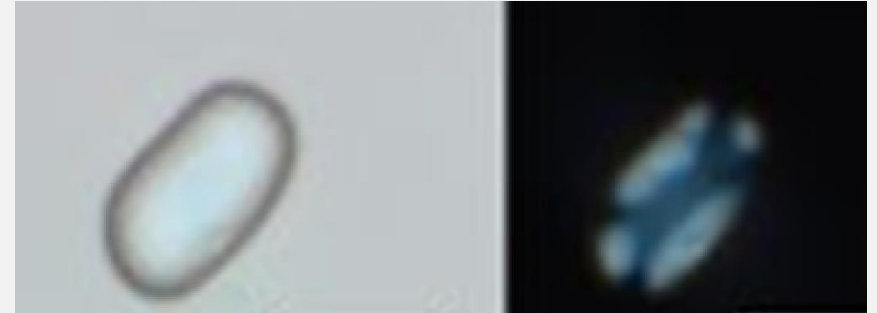
■ Zetmeelkorrels



Tarwe of gerst (*Triticeae*)



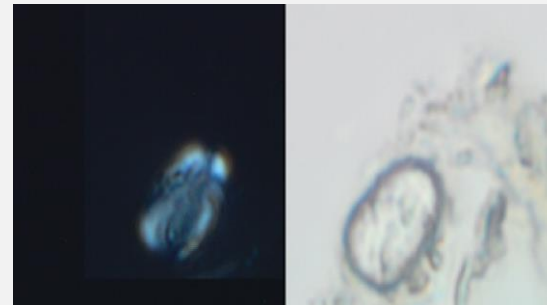
Haver (*Avena* sp.)



Erwten of bonen (*Avena* sp.)

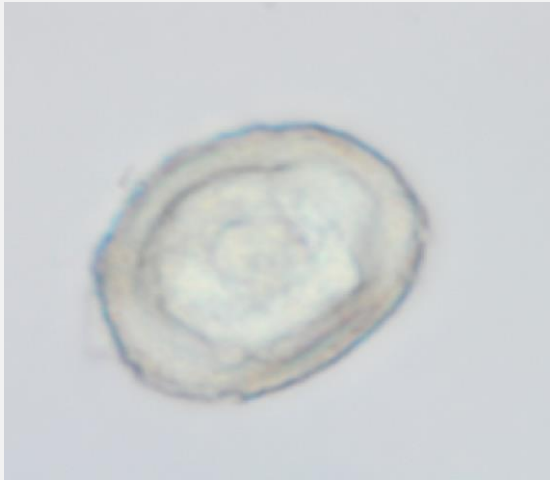


Pluimgerst (*Panicum* sp.)

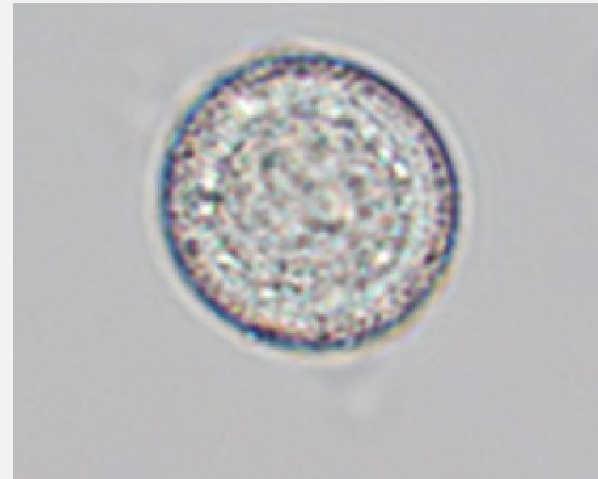


Gember (*Zingiber* sp.)

Parasieten eieren



Spoelworm (*Ascaris. sp*)

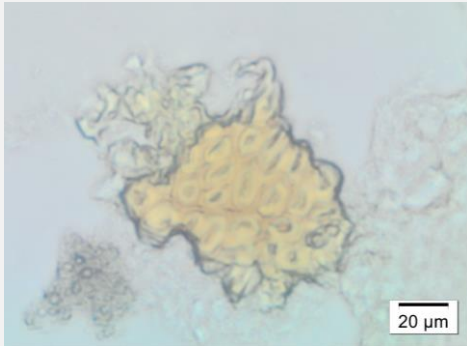


Runder-/varkenslintworm (*Taenia. Sp*)

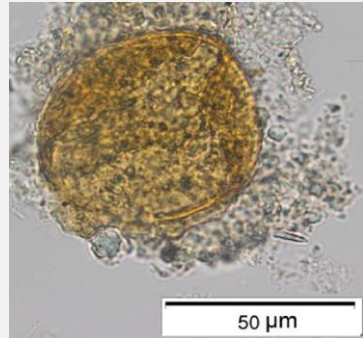


Vislintworm (*Diphyllobothrium. Sp*)

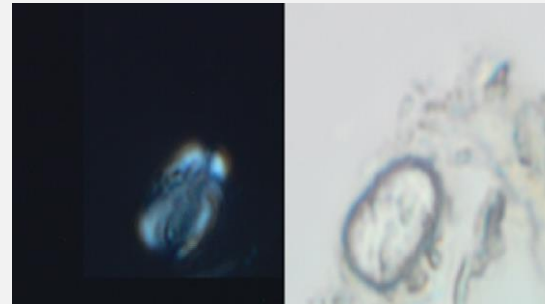




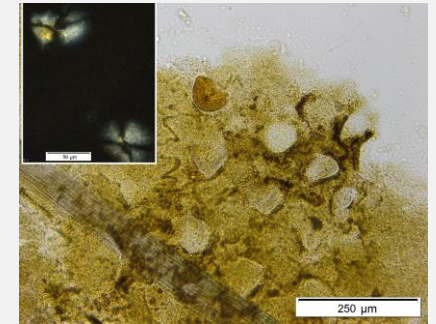
Epidermis van koolzaad/mostaard (*Brassica napus/nigra*)



Pollen van klaverzuring (*Oxalis* sp.)

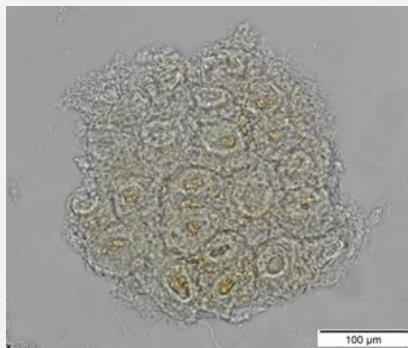


Gember (*Zingiber* sp.)

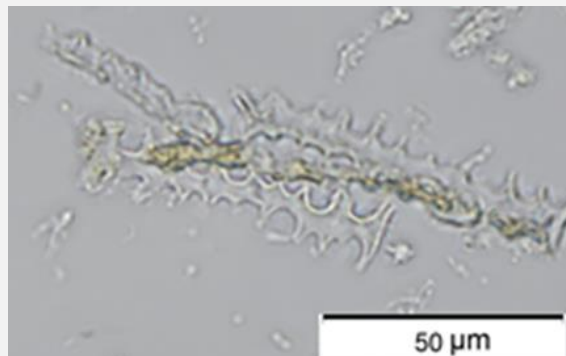


Epidermis van muur (*Stellaria* sp.)

■ Andere resten van voedsel



Epidermis van zoete kers (*Prunus avium*)



Fytolieten van kaf van Tarwe (*Triticum* sp.)

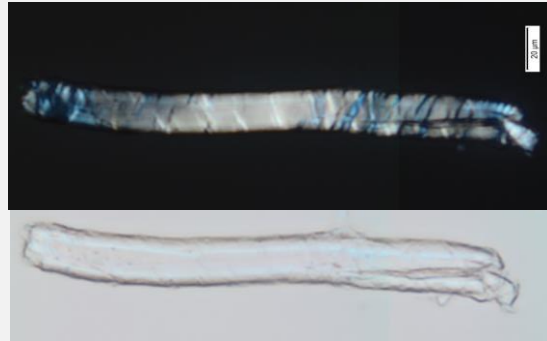


Pollen van Tarwe/Gerst/Haver (*Cereal* sp.)

Andere resten



Vlas (*Linum* sp.)



Wol



Kattenhaar



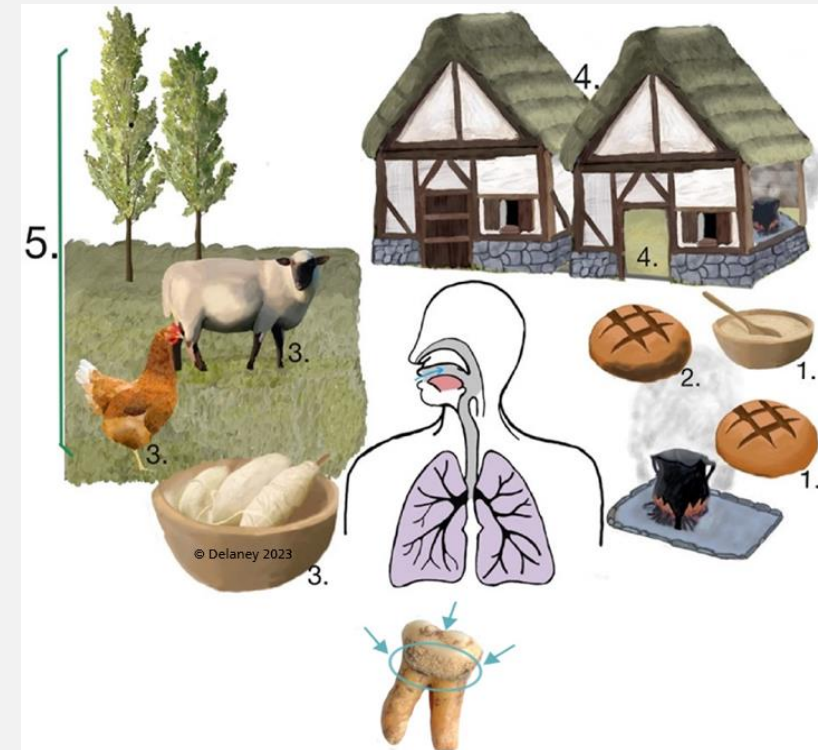
Veenbaardje



Schimmelspoor

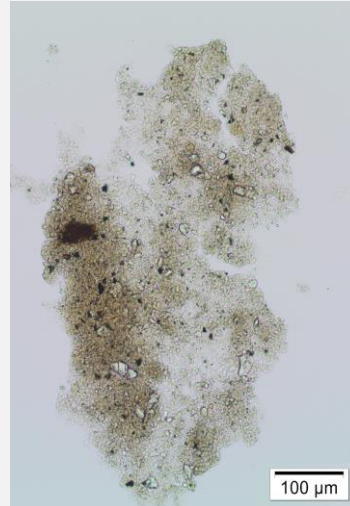


Vleugelschub van een vlinder

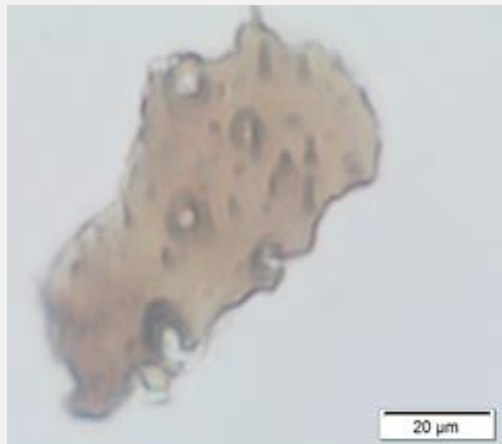


1. Eten; 2. vasthouden aan eten; 3. en 4. huiswerk, kleding, arbeid, leven/werken met dieren, en leefomgeving; 5. Lokale ecologie

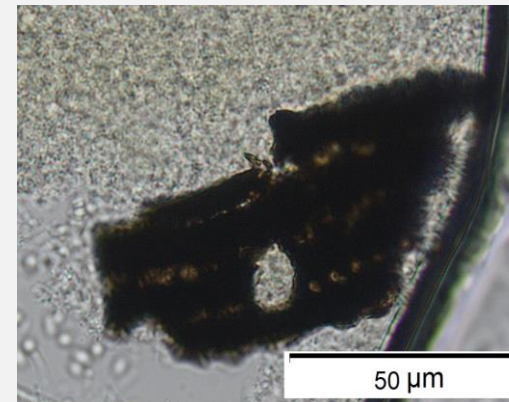
Verkoolde resten en sinusitis



Microhoutschool en roet



Microhoutschool



Verkoold fytolieten van kaf van tarwe (*Triticum* sp.)

Onderzoeksvragen toepassingen



- Voedsel, voedselpatroon en dieet
- Gezondheid
- Sociaaleconomische status
- Leefgewoontes
- Interacties met dieren
- De natuur en landschap



Bedankt
voor het luisteren!



s.delaney@baac.nl

